

INVESTMENT STAINLESS STEEL

BALL VALVE (Class-800)

INTRODUCTION

Leader Ball Valves are available in three-piece construction. It offers full flow with minimum turbulence and can balance or throttle fluids. Ball move from closed to full open in a quarter of a turn of the shaft and therefore referred to as quarter turn ball valve.

PRINCIPAL FEATURES

- Design Std.: BSEN ISO 17292.
- Pressure Temperature Rating as per ISO 5208 / API 598.
- Sturdy design for high pressure & temperature service.
- Three-piece constructions designed for easy online service.
- Floating Ball, line pressure forces the floating ball against the downstream seat to effect bubble-tight sealing.
- Mirror-finished Solid Stainless Steel Ball ensures bubble-tight sealing and lower operating torques.
- Premium quality PTFE seats to ensure bubble-tight sealing and lower operating torques.
- Inbuilt antistatic mechanisms to provide electrical continuity.
- Blowout proof stem design.
- Fire safe design as per API 607, feature secondary metal seats act in the event of a fire, after the soft-seat totally deform, the ball moves and touch the metal seat to form a leak- tight seal.
- Screwed Female Taper ends as per ASME B1.20.1 (NPT) / BS 21, Screwed Female Parallel ends as per ISO 228 / BS 21 available on request.
- Socket-weld / Butt Welded are available on request with 100mm Nipple on both the ends.
- Lever operated.
- Valves can be offered with electrical and Pneumatic actuators on request.

END CONNECTION

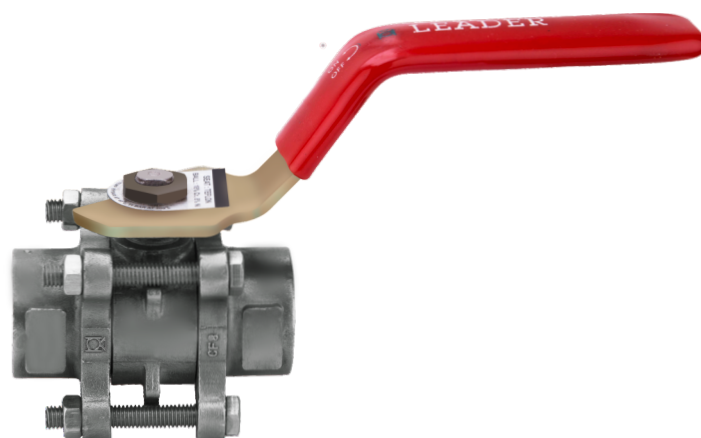
Screwed ends / Socket Weld.

WORKING PRESSURE

Maximum working pressure 69 Bar @ 38°C.
See Pressure / Temperature Chart at page No.38.

TEMPERATURE LIMITS

Maximum working temperature 175°C.
See Pressure / Temperature Chart at page No.38.



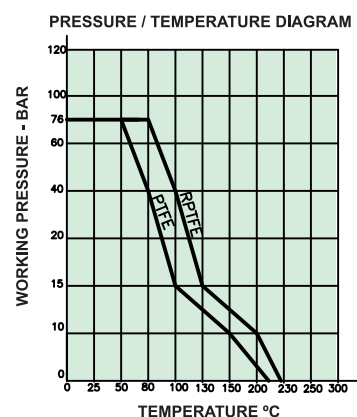
■ Item Code:	CSS012,	CSS013
■ Bore Type:	Reduced Bore	Full Bore
■ Pressure Rating:	CL-800,	CL-800
■ Testing Standard:	API-598, BSEN 12266 Part-1	
■ Size Range:	15mm to 50mm	
■ Product Standard:	BSEN ISO 17292	

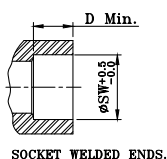
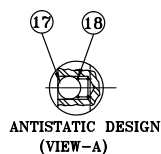
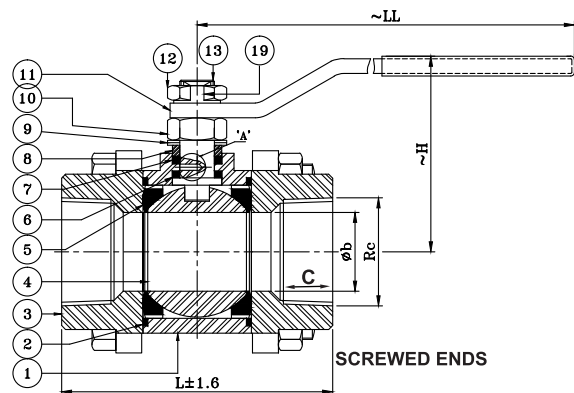
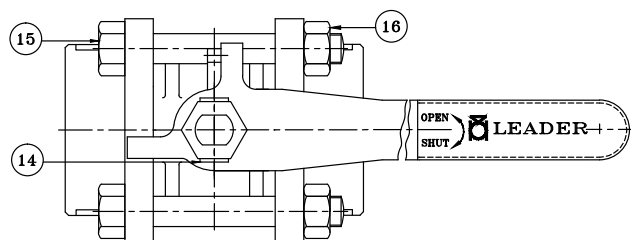
SUITABLE FOR

Water	Oil	Air	Gases
✓	✓	✓	✓

TEST PRESSURE (Hydrostatic)

Rating	CL-800
Body (Hyd.)	178 Bar
Seat (Hyd.)	76 Bar
Seat (Air)	6.9 Bar





DIMENSIONAL DATA CLASS-800 (REDUCED BORE)

SIZE (mm)	15	20	25	32	40	50
L	60	70	85	95	110	120
Øb	9.5	12.5	19	25	32	40
~H	80	82	103	112	118	122
C	14.5	15	18	18	20	18
Rc	1/2"	3/4"	1"	1-1/4"	1-1/2"	2"
~LL	165	165	180	180	230	272
ØSW	21.7	27	33.8	42.5	48.6	61.6
D	10	13	13	13	13	16

DIMENSIONAL DATA CLASS-800 (FULL BORE)

SIZE (mm)	15	20	25	32	40
L	70	85	95	110	120
Øb	12.5	19	25	32	40
~H	82	103	112	118	122
C	15	18	19	20	20
Rc	1/2"	3/4"	1"	1-1/4"	1-1/2"
~LL	165	180	180	230	272
ØSW	21.7	27	33.8	42.5	48.6
D	10	13	13	13	13

MATERIAL SPECIFICATION

P.No.	NAME OF PART	MATERIAL	SPECIFICATION
1	BODY	STAINLESS STEEL	ASTM A351 Gr. CF8
2	BODY SEAL	PTFE / GRAFOIL	
3	PIPE CONNECTOR	STAINLESS STEEL	ASTM A351 Gr. CF8
4	BALL	STAINLESS STEEL	ASTM A351 Gr. CF8
5	SEAT	PTFE	
6	STEM SEAL	PTFE / GRAFOIL	
7	GLAND SEAL	PTFE / GRAFOIL	
8	GLAND	STAINLESS STEEL	ASTM A276 TYPE 304
9	BELLEVILLE WASHER	SPRING STEEL	BS 970 EN 42J
10	STEM NUT	STAINLESS STEEL	ASTM A276 TYPE 304
11	LEVER (ZINC PLATED)	CARBON STEEL PLATE WITH PLASTIC SLEEVE	
12	LEVER NUT	STAINLESS STEEL	ASTM A276 TYPE 304
13	STEM	STAINLESS STEEL	ASTM A276 TYPE 304
14	LOCKING WASHER	STAINLESS STEEL	ASTM A276 TYPE 304
15	BOLTS	STAINLESS STEEL	ASTM A193 Gr.B8
16	NUTS	STAINLESS STEEL	ASTM A194 Gr.8
17	ANTISTATIC BALL	STAINLESS STEEL	SS TYPE 316
18	SPRING	STAINLESS STEEL	SS TYPE 316

Note : The above data is subject to change without notice due to our continuing product improvement program.